

ShareClass

Teaching software instructions

Catalogues

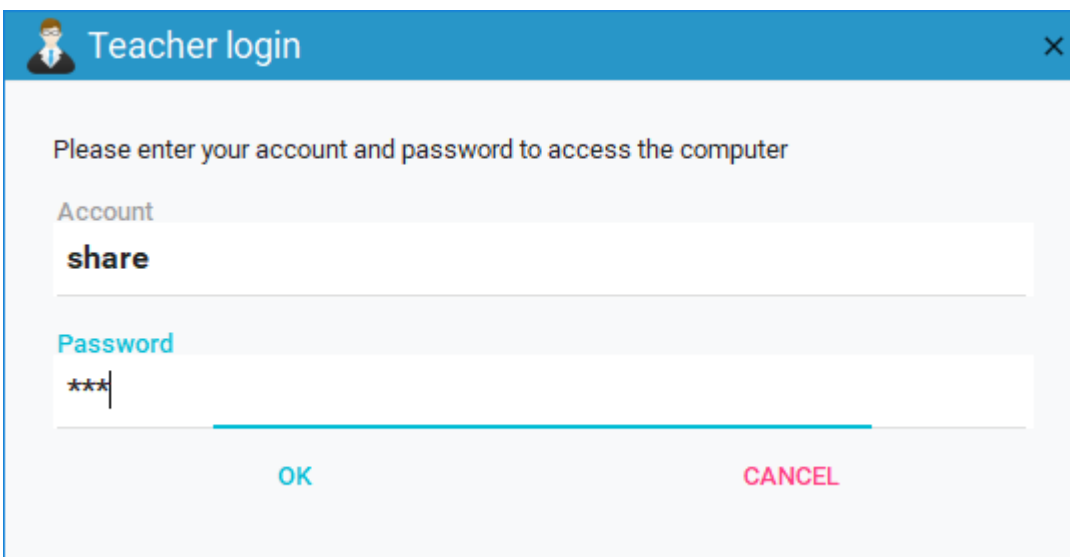
1. Introduction to multimedia teaching systems	3
2. Log in	3
3. Main Interface.....	4
4.Functional Interface	5
4.1 Broadcasts	5
4.2 Student Demo	6
4.3 Lock Screen	6
4.4 Remote Control	7
4.5 Open Software	8
4.6 User Management.....	9
4.7 Terminal Management	11
4.8 Desktop Management.....	12
5.Setting Interface	13
6.Raise hand	14
7.Frequently Asked Questions	15

1.Introduction to multimedia teaching systems

The multimedia teaching system is used with a terminal for related teaching operations, including the following functions: screen broadcast, student demonstration, student desktop lock, remote control, remote open software, user management, terminal management, desktop management and other functions; can greatly facilitate the use of school teaching.

2.Log in

After the software is turned on, you need to log in the current administrator account by default; please enter the administrator account login information.



Teacher login

Please enter your account and password to access the computer

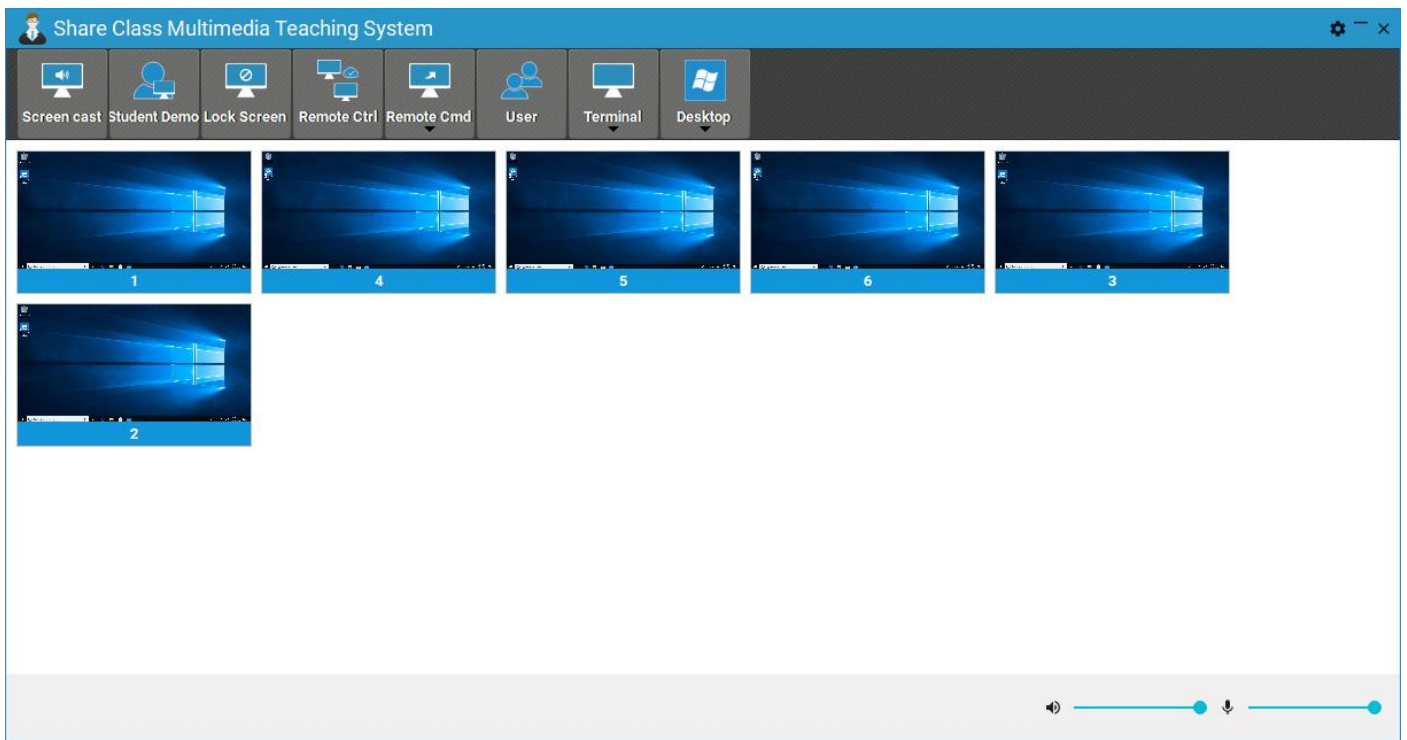
Account
share



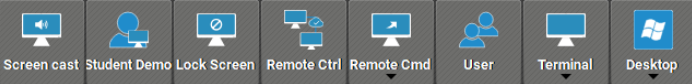
Password

OK CANCEL

Password is required to login, if the current administrator account does not have a password, please set the password first, then run the software to login.

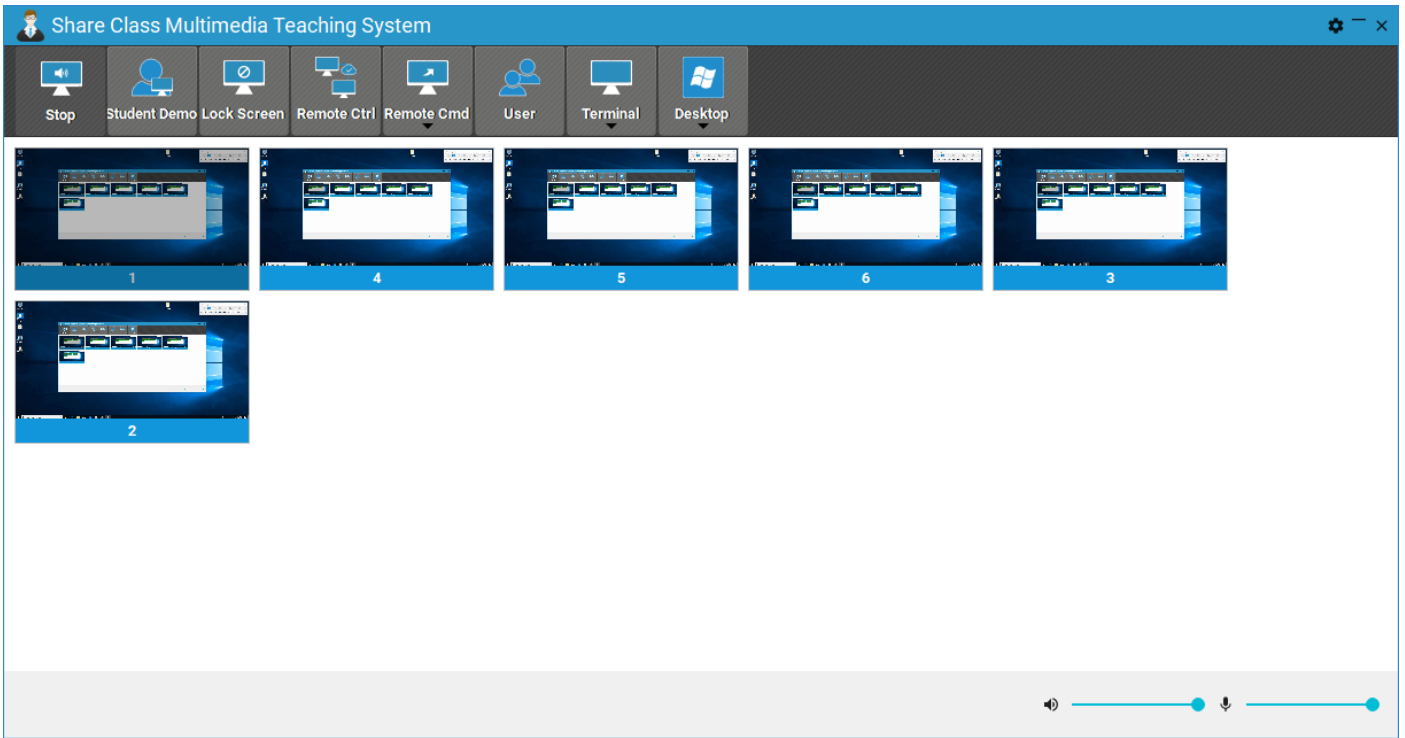
3.Main Interface



	<p><u>Setting button</u></p>
	<p>Audio volume and microphone volume settings for broadcasts</p>
	<p>Function buttons:</p> <ul style="list-style-type: none"> ◆ Screencast ◆ Student demonstrations ◆ Lock screen ◆ Remote control ◆ Remote command ◆ User management ◆ Terminal Management ◆ Desktop management

4.Functional Interface

4.1 Broadcasts

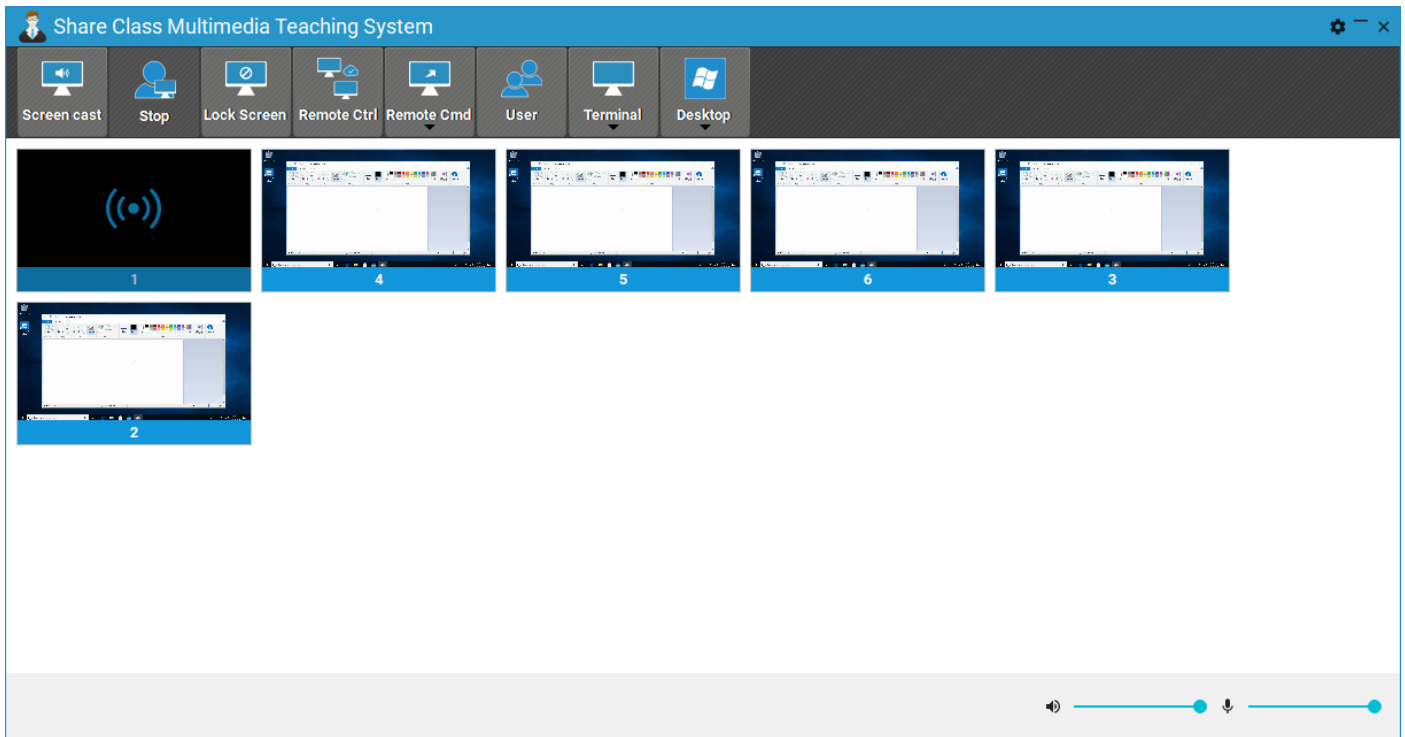


Broadcast function means broadcasting the teacher machine screen to all terminals; supports broadcast audio; (refer to Chapter 5)

Click the "Screen Broadcast" button to start broadcasting, and click the "Stop Broadcast" button to stop broadcasting; please be patient as this operation takes a few seconds to complete.

When the broadcast is turned on, the terminal screen is the same as the teacher's screen; the parameters of the broadcast are configured in the setting interface (refer to Chapter 5).

4.2 Student Demo

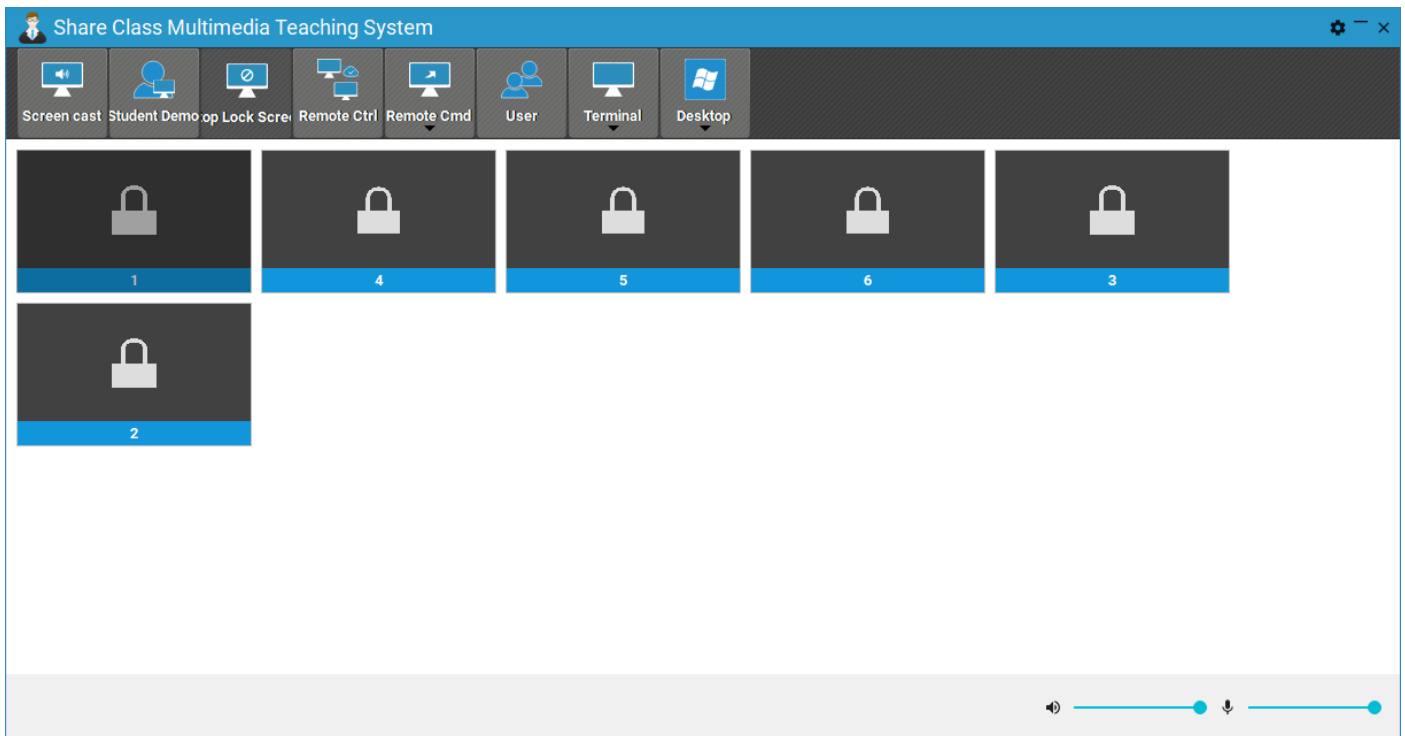


A student presentation feature is one that broadcasts a particular student's desktop for all terminals to view.

Click the "Student Demo" button to start the demo and the "Stop Demo" button to stop it.

Note: Before clicking on the "Student Demo" button, the student terminal for the demo needs to be selected.

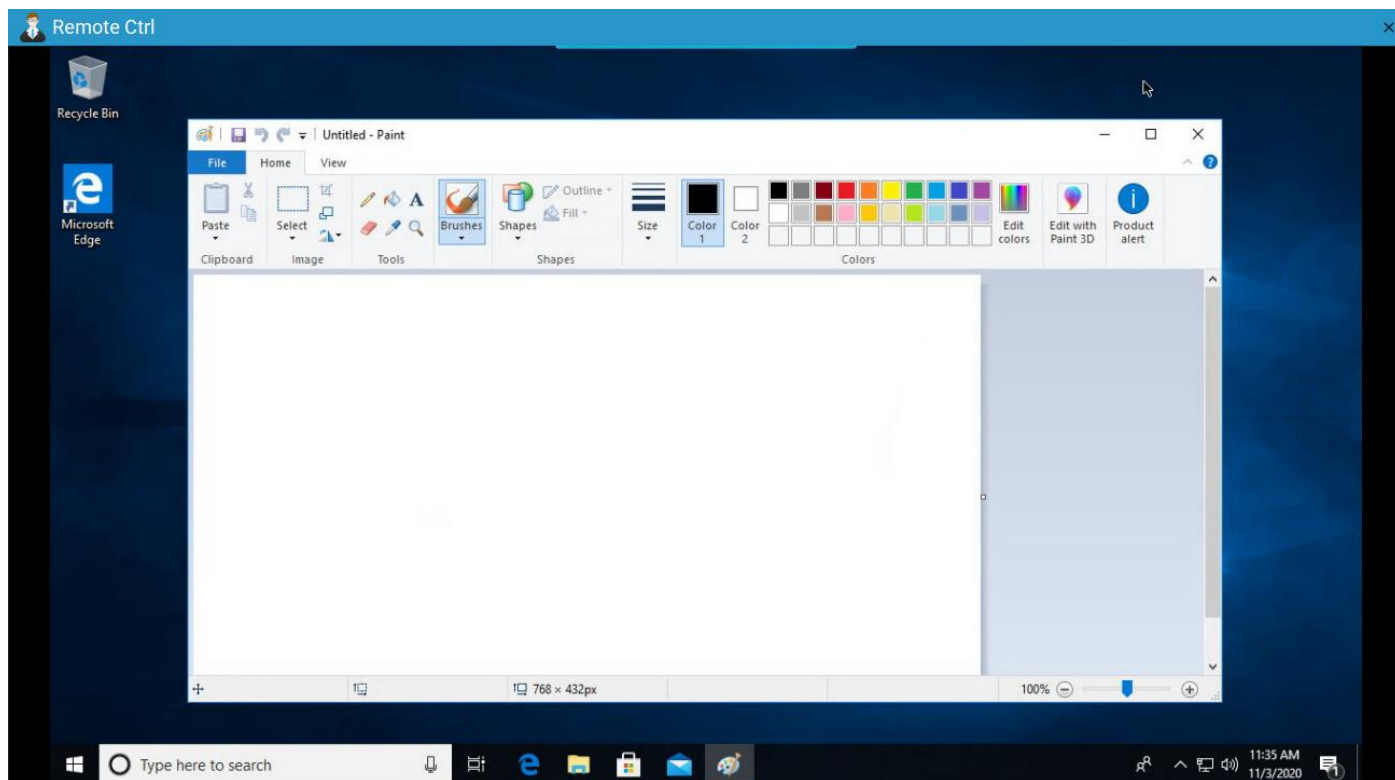
4.3 Lock Screen



The lock screen feature is used to prohibit students from viewing content.

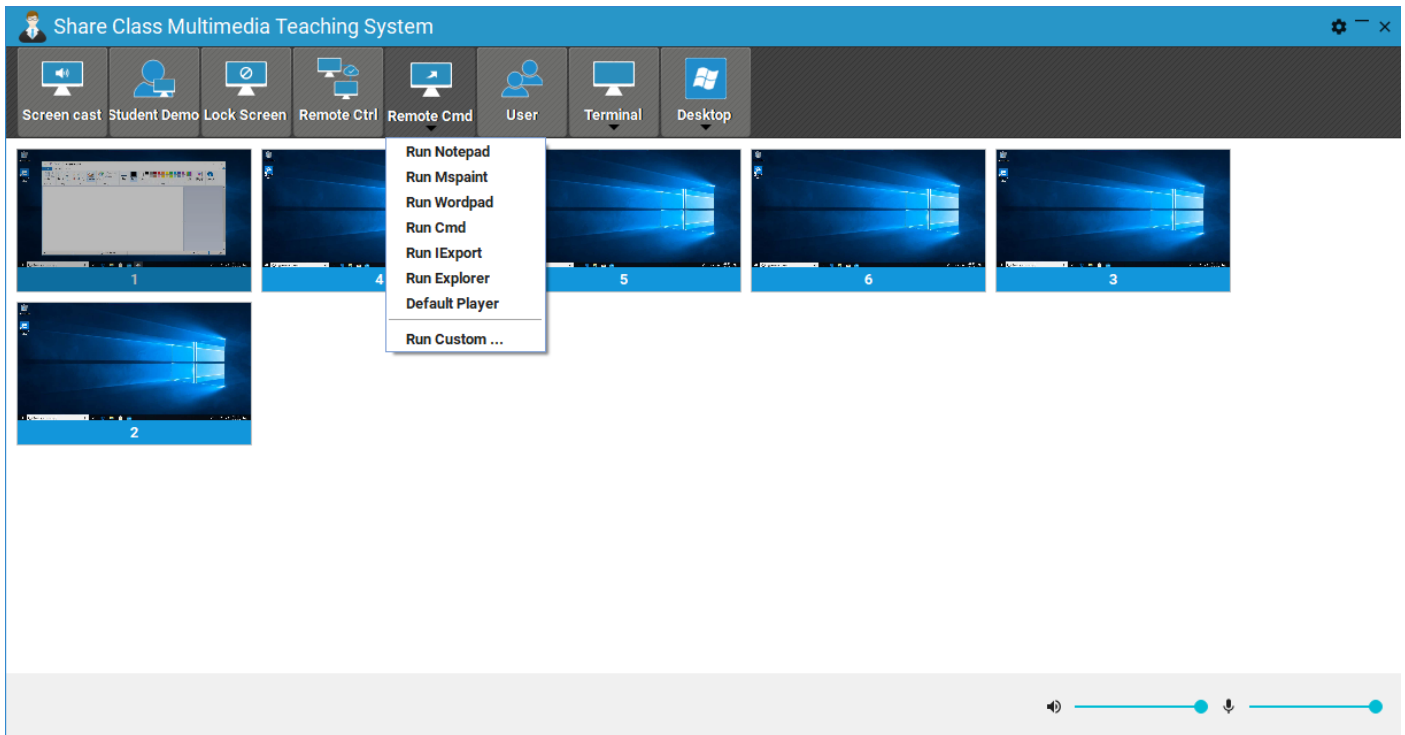
Click the "Lock Screen" button, the lock screen icon will appear on all terminals and cannot be operated on the terminal; to unlock the screen, click the "Stop Screen Lock" button.

4.4 Remote Control



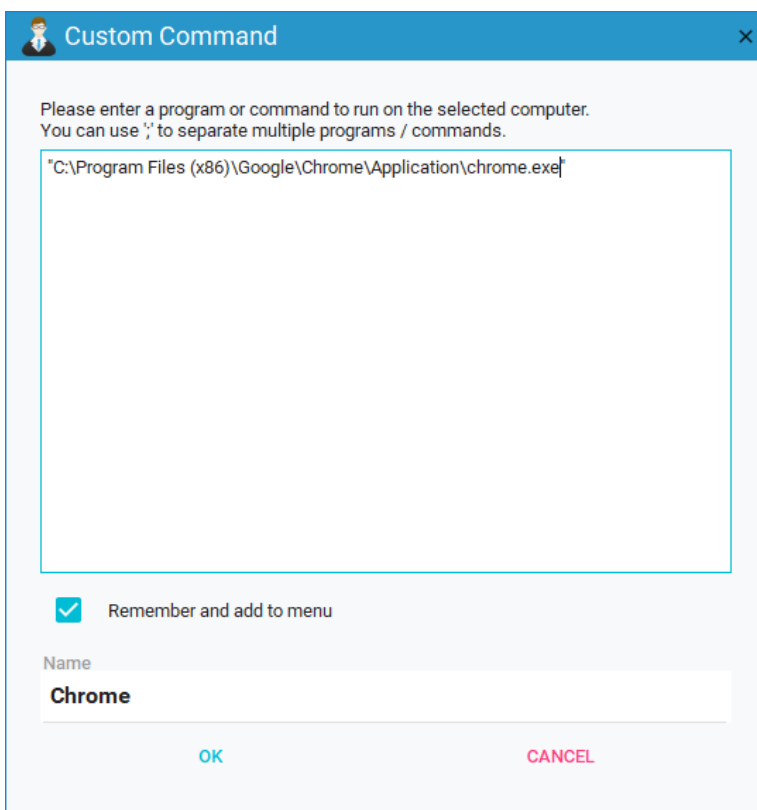
Click the "Remote Control" button, the remote control window will pop up, the default support for the operation terminal interface; if you just want to view, please check the only view option in the settings interface. Clicking the Close button on the remote control window to exit the remote control interface.

4.5 Open Software



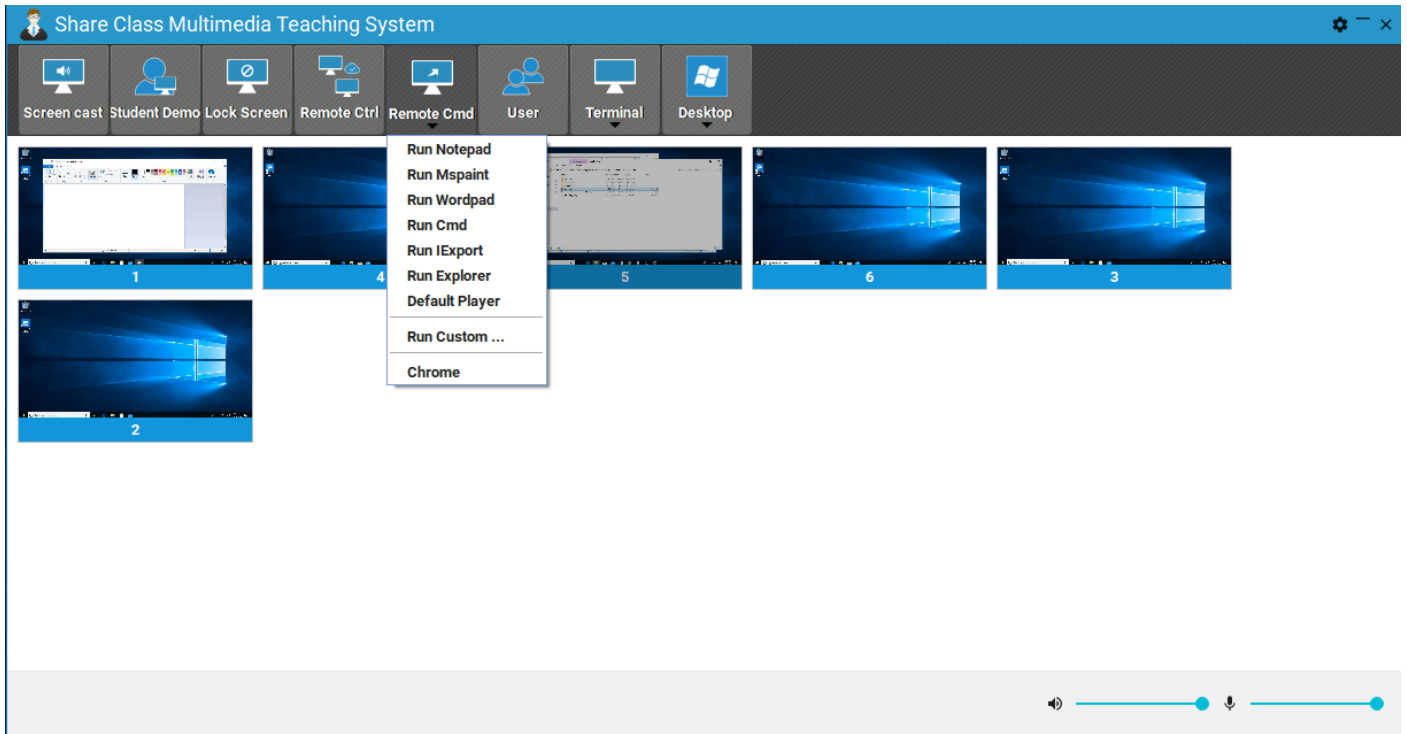
Support to open the software for the specified terminal, please select the terminal to be operated before clicking. Support for quick opening of Notepad, screen, writing pad, command prompt, browser, explorer, default player settings, etc..

Custom commands can also be run.

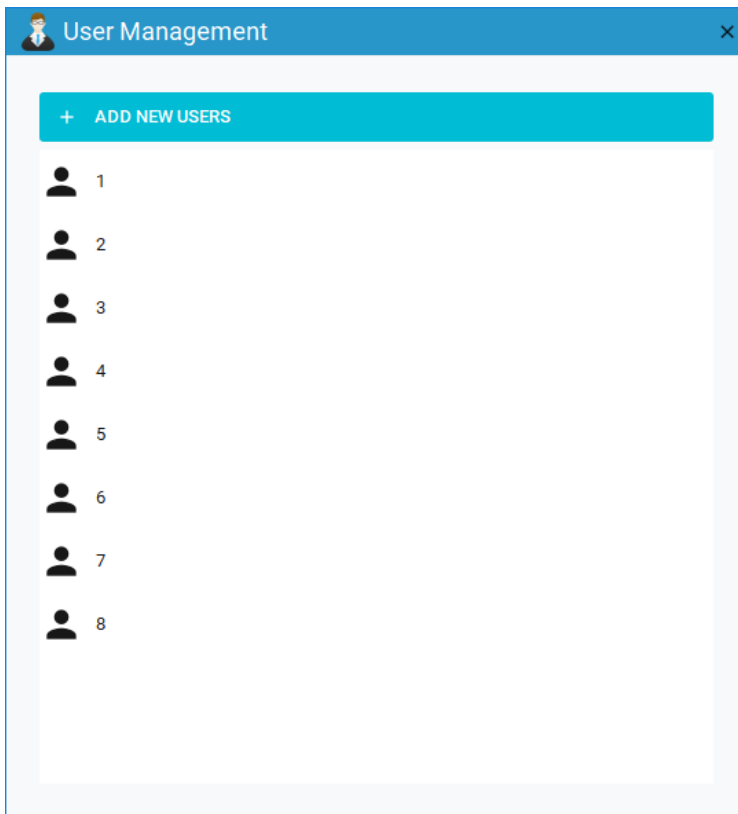


Running a custom command requires double quotation marks over the full path of the executed command, or the software will not open; as shown above; and supports adding this command to a drop-down menu.

the excel shown in the figure has been added to the drop-down menu shown below.



4.6 User Management



User Management [Close]

← Add New User

If multiple users are created, the username will be prefixed and created by username0 and username1... Rules.

User Name:

Password:

Number:

OK CANCEL

User Management [Close]

← Add New User

If multiple users are created, the username will be prefixed and created by username0 and username1... Rules.

User Name:

Password:

Number:

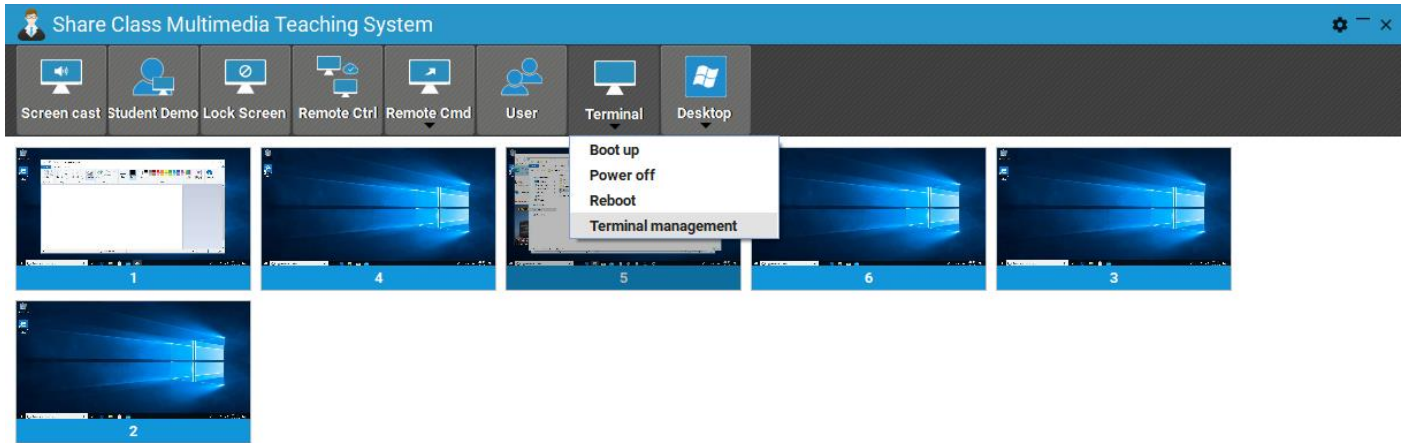
Password Rule:

- Use same password
- Use username as password
- Use digital numbers as passwords

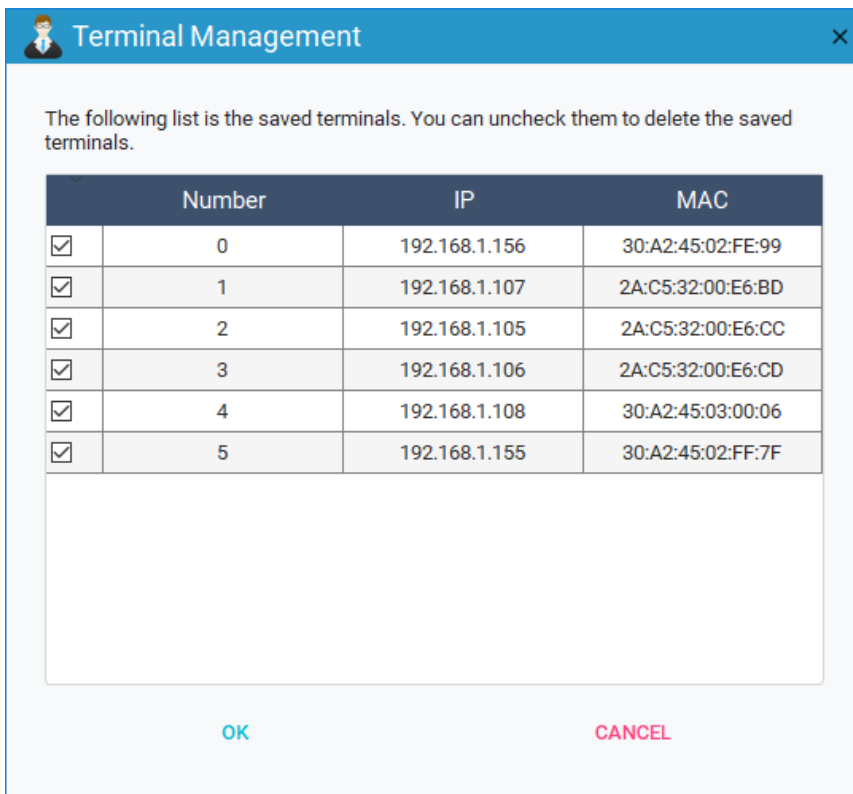
OK CANCEL

The user management interface shows all current users, and users can be deleted by clicking the right mouse button. The Add User window allows for quick creation of users and supports batch creation.

4.7 Terminal Management



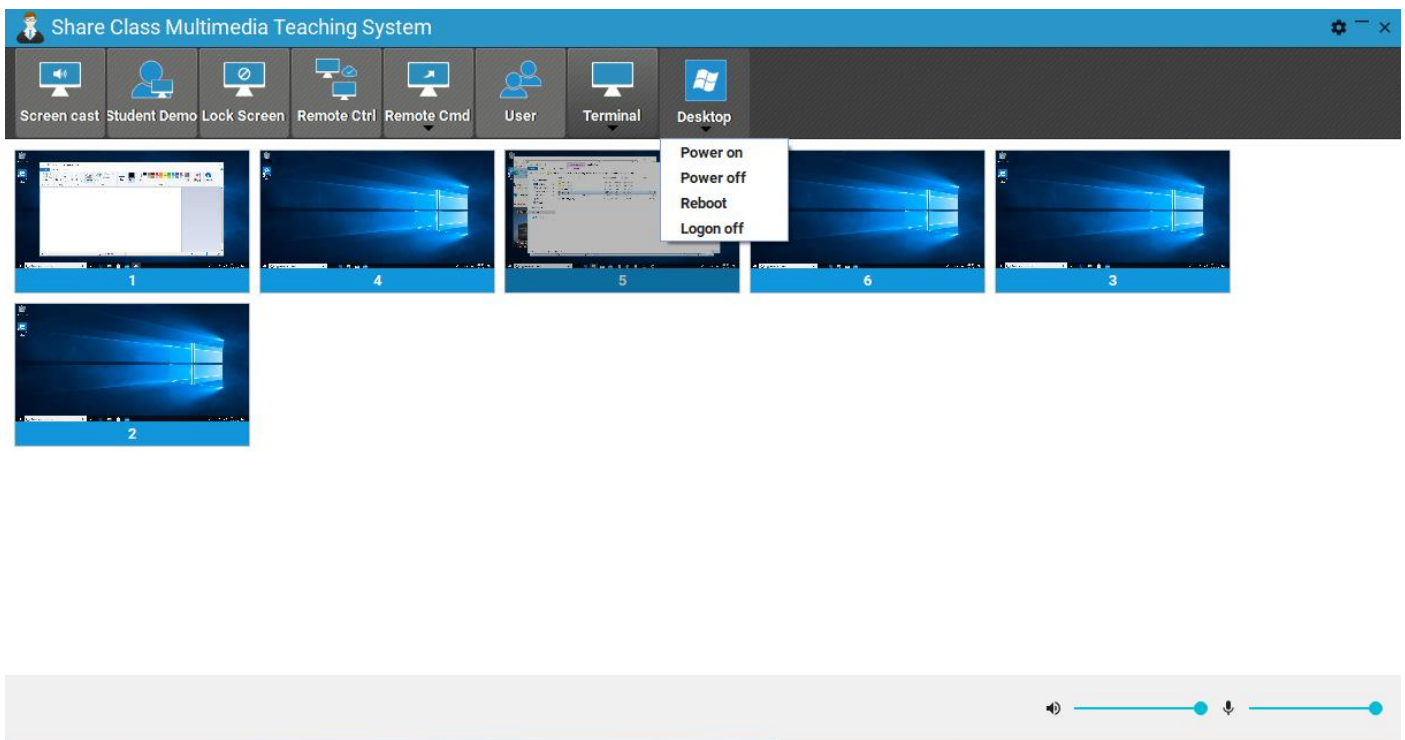
Desktop management function, support for the terminal to boot, shutdown, restart, and logout and other operations; boot function requires the terminal to support network wakeup.



The terminal management function is to perform deletion operations on some terminals; unselected

terminals can be deleted.

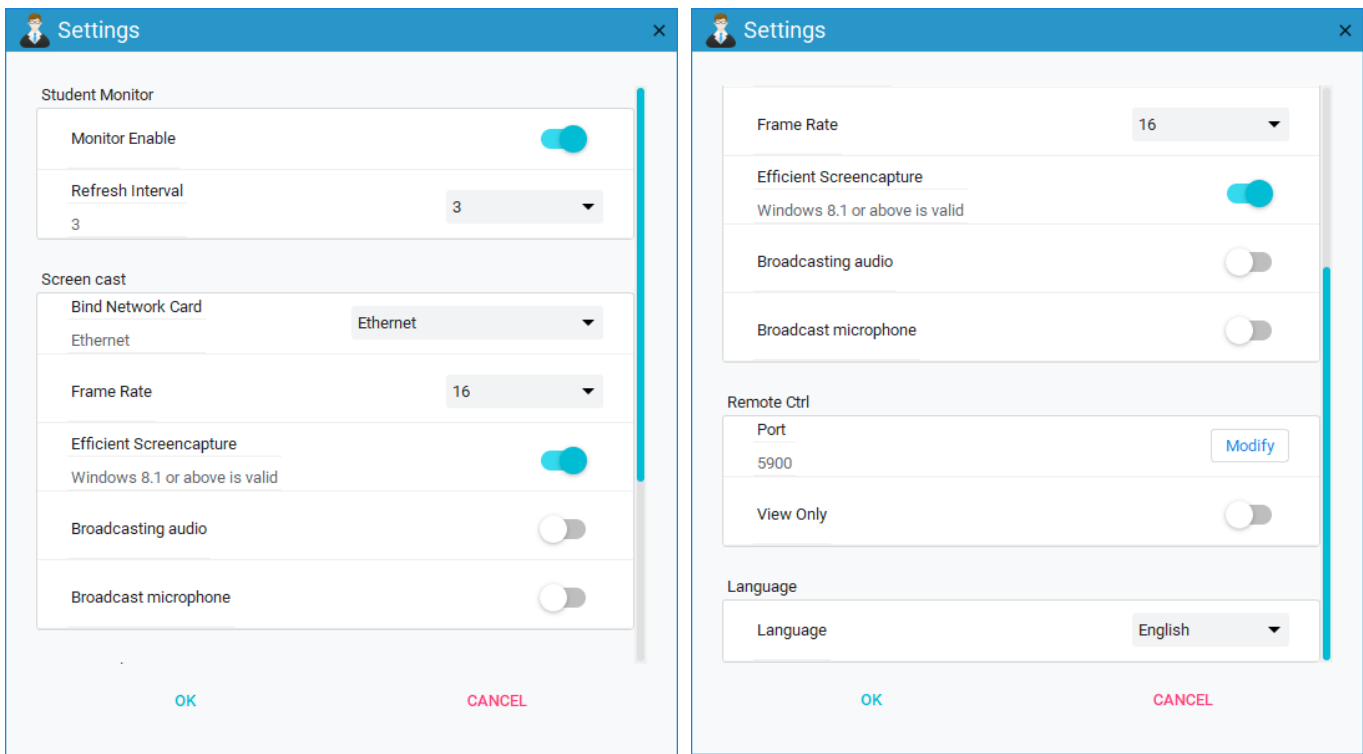
4.8 Desktop Management



Desktop management function, support for other hosts connected to the terminal to boot, shutdown, reboot, and logout operations; boot function requires the host connected to the terminal to support network wakeup.

Note: Boot, shutdown and reboot will not work on the host where the software is currently located.

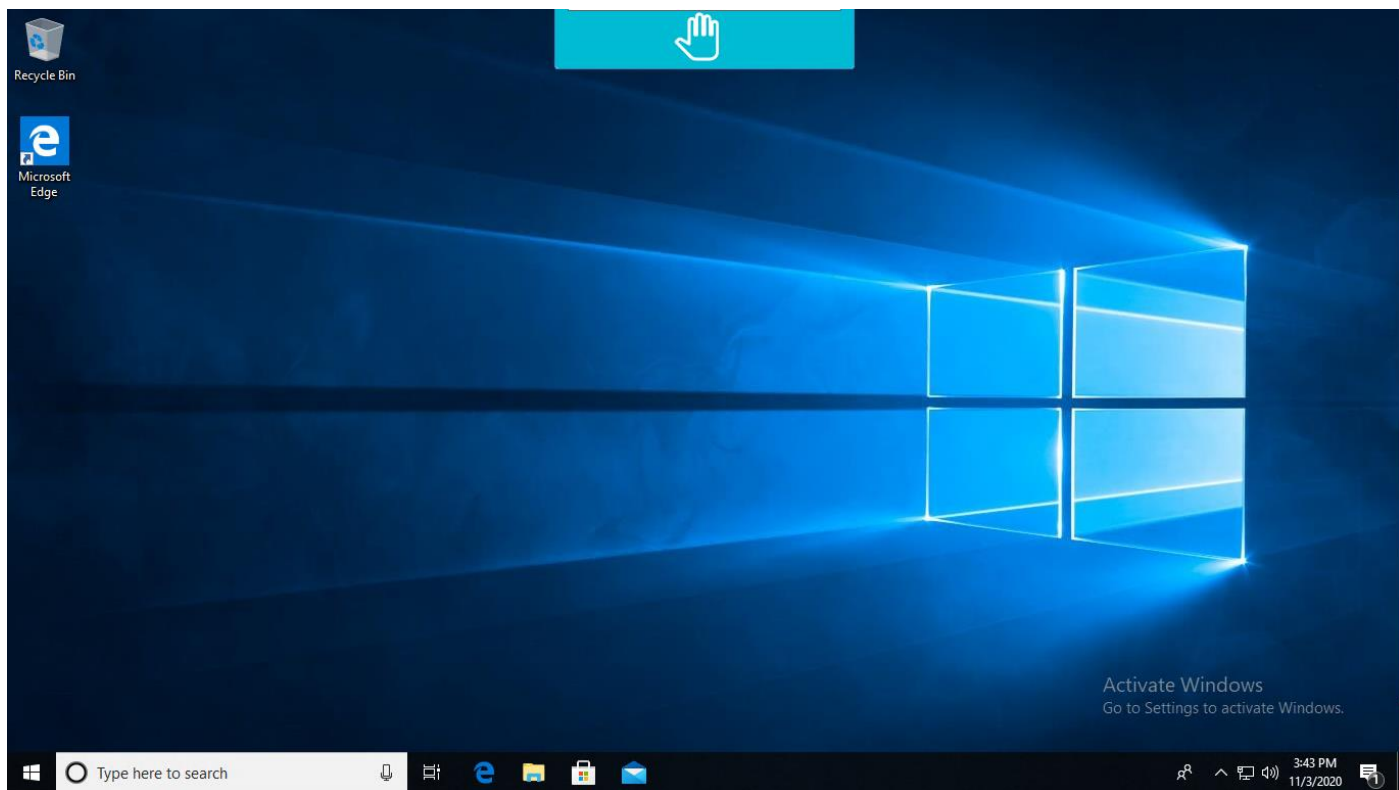
5.Setting Interface



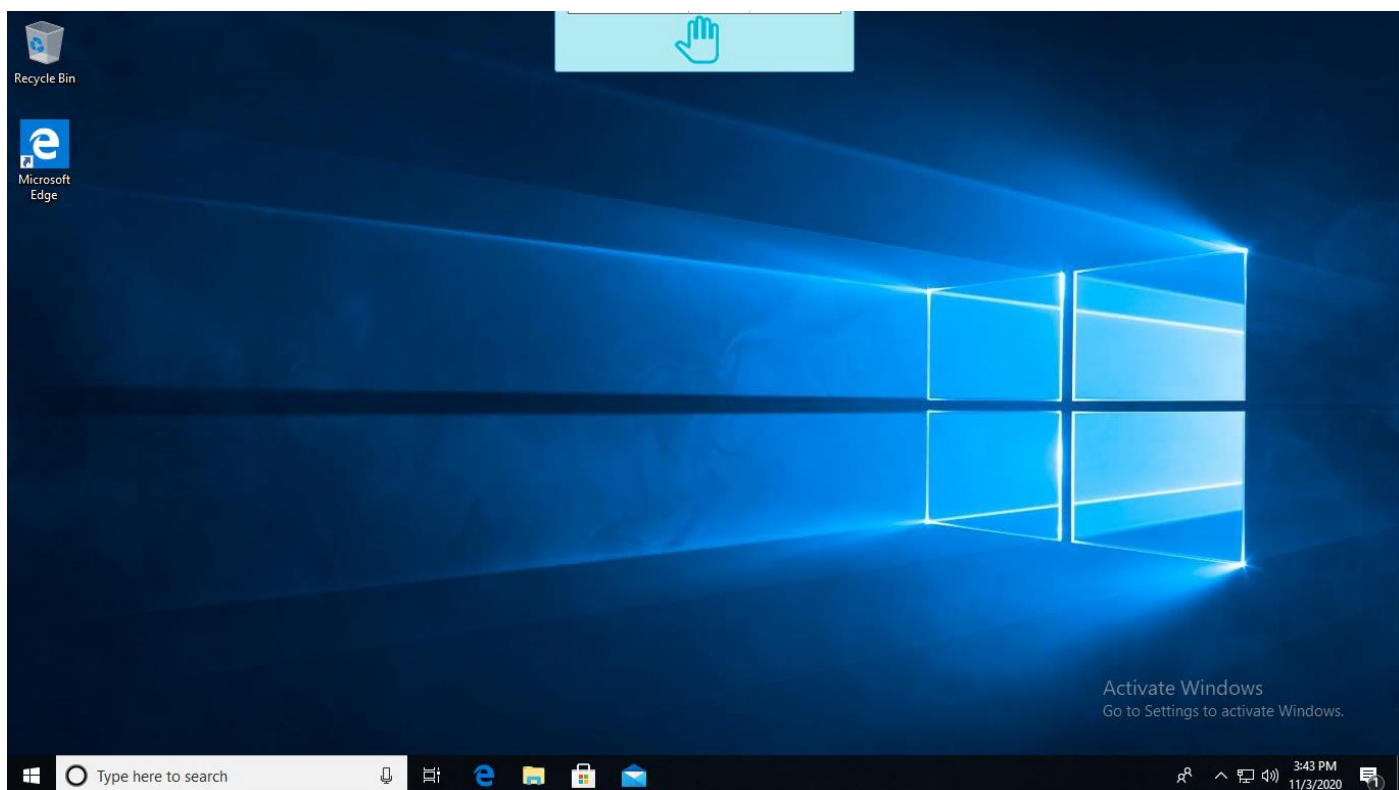
Item	Explain
Monitor Enable	Select whether to display the terminal screen dynamically.
Refresh Interval	Dynamic display of the terminal screen refresh interval in case of terminal interface.
Bind Network Card	Network cards used for broadcasting.
Frame Rate	Broadcast frame rate settings.
Efficient screenshot	Efficient screenshot, Win10, Windows server 2016, 2019 systems recommend enabling this option.
Broadcast audio	Select whether to broadcast the host audio (the sound output from the host audio interface).
Broadcast microphone	Select whether or not to broadcast host microphone sound.
Port	Port number for remote control, typically 5900.
View Only	Whether the remote control is limited to a view-only state that is not enabled to operate the terminal desktop.
Language	Select the language in which the software will be displayed, supporting Chinese and English.

It is recommended that you keep the default settings; options can be adjusted in the event of an exception.

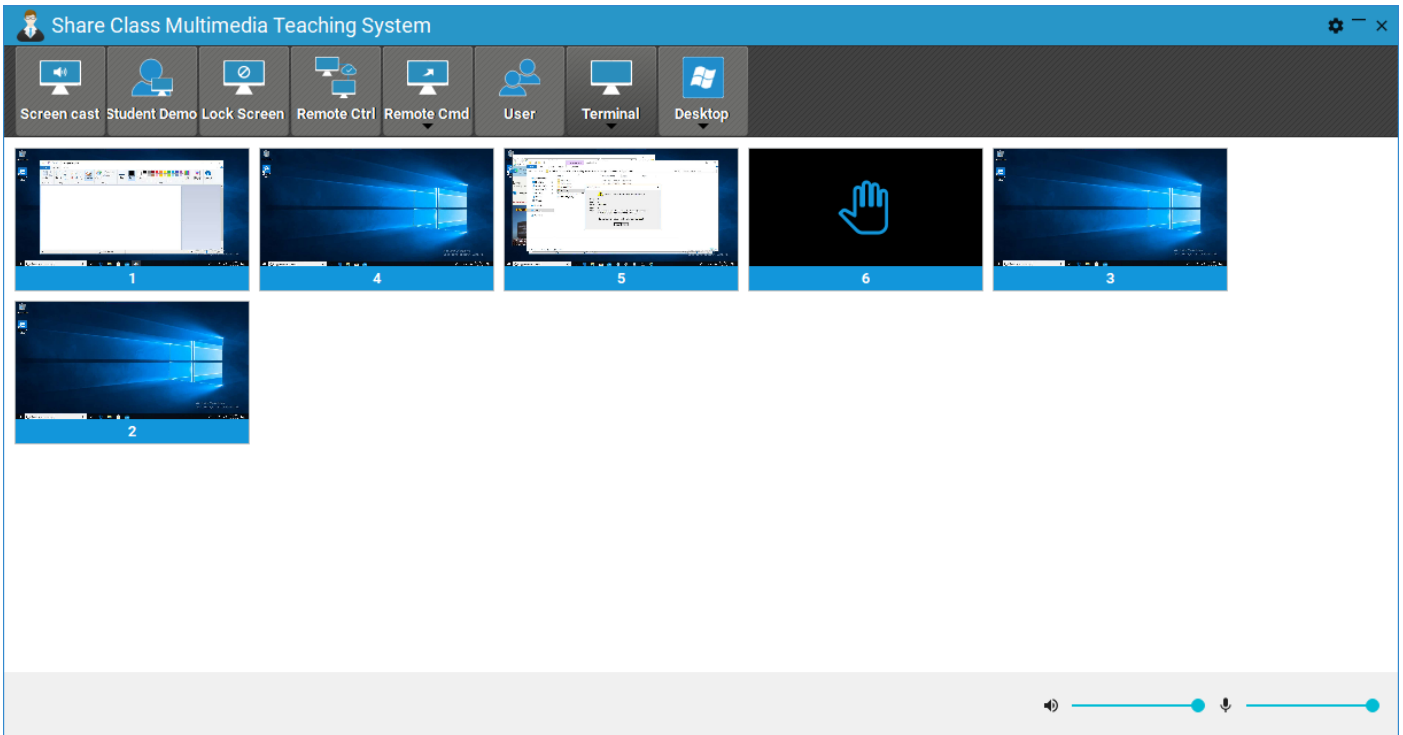
6.Raise hand



This icon is shown in dark if you click on the raise your hand icon.



After clicking on the raise hand icon, this icon is shown in light color; click again to cancel the raise hand.



As can be seen, user 6 has performed a show of hands.

Clicking on the "palm" icon at the top (which pops up automatically when the mouse is placed in the middle of the top of the desktop) will report to the teacher machine, which will be able to check the request for this terminal.

7. Frequently Asked Questions

1) No username displayed?

Please turn off the teacher firewall.

The terminal needs to be connected to the host, otherwise the username will not be displayed either.

2) Inactive after radio on?

Refer to Chapter 5 for a status switch on the efficient screenshot function and then check that the broadcast function is working properly.